



Aluminum Folding Arched Motorcycle Ramp Instructions for Part # BW-9440-HD, BW-10840-HD



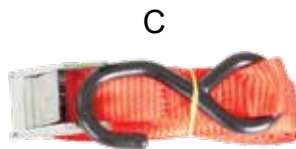
General Guidelines

- It is the user's responsibility to read and follow all instructions.
- Keep these instructions with the product at all times and review before each use.
- It is the responsibility of this product's owner to furnish the instructions to any person that borrows or purchases the product.
- Inspect the product before use to ensure it is assembled properly and all parts are in safe working order and free of defects.
- Never modify this product in any way.
- All circumstances cannot be addressed in these instructions. Please use common sense and practice general safety measures when using this product.
- Parts and/or instructions are subject to change without notice.

Safety

- Clean the ramp(s) and motorcycle of debris before loading and unloading the motorcycle.
- A helmet must be worn when loading and unloading vehicles using the motorcycle ramp(s).
- Store the motorcycle ramp(s) in a safe dry place.
- Never exceed the maximum weight limit displayed on the side of the motorcycle ramp(s).
- Never use the ramp(s) on a unsafe or damaged tailgate, trailer, or other loading surface.
- Thoroughly inspect tailgate cables and ramp safety straps for cracks or fraying.

Included Hardware



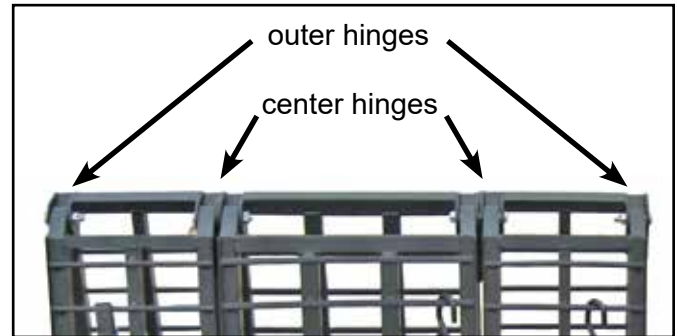
Part	Description	Quantity
A	Short Bolt, Nut, and Cotter Pin	6
B	Long Bolt, Washer, and Nut (optional)	2

Part	Description	Quantity
C	Safety Strap	3
D	Connecting Bracket and Pin	4

Assembly

Option 1 (2 Long Bolts, 2 Short Bolts, 4 Connecting Brackets)

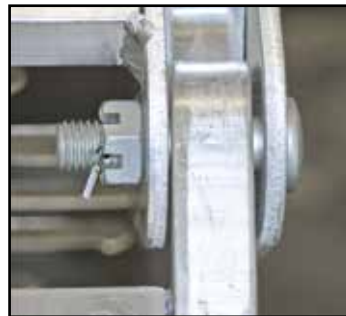
1. Align the three ramps.
2. Place the long bolts through both center hinges.
3. Thread the nuts onto the bolts and tighten securely.
4. Place the short bolts through the outer hinges.
5. Thread the nuts onto the short bolts and tighten securely.
6. Feed the cotter pins through and spread the cotter pin ends.
7. Connect the ramp sections toward the top and bottom of the assembly using the four connecting brackets. This will help stabilize the ramps.



Long Bolt



Short Bolt



Connecting Bracket



Option 2 - Allows for easier compact storage (6 Short Bolts, 4 Connecting Brackets)

1. Place the short bolts through the hinges on each individual ramp.
2. Thread the nuts onto the short bolts and tighten securely.
3. Feed the cotter pins through and spread cotter pin ends.
4. Align the ramps and connect the sections toward the top and bottom of the assembly using the four connecting brackets. This will help stabilize the ramps.

Loading & Unloading

Loading:

1. Park the vehicle and/or trailer on level, hard terrain.
2. Set the parking brake on the vehicle. If loading onto a trailer, make sure the trailer is properly hitched to the vehicle and level.
3. Rest the motorcycle ramp(s) attaching fingers/plates onto the edge of the tailgate or trailer. Make sure the motorcycle ramp is tight up against the loading surface, centered on the loading surface, resting on hard, level ground, and is at the lowest angle possible.
4. Loop the included safety straps around the main support rail of the motorcycle ramp(s) approximately 2'-3' from the tip of the motorcycle ramp(s). Attach the other end of the safety strap to a secure spot on the underside of the vehicle (i.e. steel bumper, receiver hitch). Pull safety straps tight to remove slack. (See example pictures below.)
5. Always have a second adult person to spot for the rider while loading. Never allow a child to spot for the motorcycle rider and never stand in the path of the motorcycle.
6. Wearing a helmet, drive the motorcycle up the motorcycle ramp(s) in a slow, smooth, constant motion. NEVER OVER-ACCELERATE OR STOP IN THE MIDDLE OF THE RAMPS.
7. Once loaded, set the brake on the motorcycle and secure with tie-downs.
8. Remove the safety straps and motorcycle ramp(s) and store away.

Unloading:

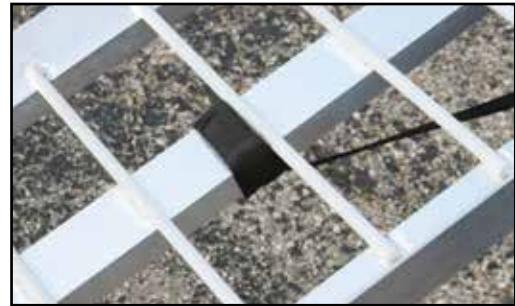
1. Repeat steps 1-5 from above.
2. Wearing a helmet, back the motorcycle slowly down the motorcycle ramp(s). Using only the brake, slowly descend the ramp until the motorcycle is fully off the motorcycle ramp(s).
3. Remove the safety straps and motorcycle ramp(s) and store away.

Proper Safety Strap Usage

1. Loop the safety strap around the main rail of the ramp approximately 2'-3' from the tip of the motorcycle ramp(s). Loop S-hook through loop end.



2. Pull the safety strap tight, cinching the loop around the ramp main tube. Feed the strap underneath the ramp.



3. Hook the other end of the safety straps to a secure (non-plastic) point on the back of the vehicle. Pull tight to remove slack.



Bumper Tie Down Point



Hitch Chain Loop Tie Down Point

Product Warranty and Liability

GENERAL PRODUCT WARRANTY: Products purchased from the Authorized Dealer (original place of purchase) or Merchant (“Dealer”) will be free of defects in material and workmanship at the time of receipt, and will meet the specifications stated at the place of purchase transaction or online at the Dealer’s website, under normal use and service when correctly installed, operated and maintained. This product warranty is effective for the period of time stated below, unless otherwise stated in the product instructions or depicted in the product advertisement. **All Authorized Dealer warranties are NON-TRANSFERABLE** and cover only the original end purchaser. This limited warranty does not cover products purchased through non-authorized dealers. Non-authorized dealer receipts are not accepted for warranty verification.

*****Warranty claims must be made directly to the original place of purchase.*****

WARRANTY PERIOD: This warranty remains in force for one year from the date of the product’s accepted delivery. The Authorized Dealer offers a one year manufacturer’s warranty for most products unless otherwise specified on the product advertisement.

WARRANTY SERVICE: The Authorized Dealer will replace any defective or malfunctioning part at no charge, including payment of the shipping costs of parts or replacement product to and from the manufacturer. The purchaser is responsible for labor charges. If the product does not meet specifications as depicted in the advertisement, the Authorized Dealer will refund the full purchase price of the product.

Questions regarding the warranty on a specific product and warranty claims should be directed to the Authorized Dealer with whom the purchase transaction was made.

WARRANTY LIMITATIONS: The above warranty does not apply to products that are repaired, modified or altered by any party other than the Authorized Dealer; are subjected to unusual physical stress or conditions (such as overloaded ramps or corrosion), natural disaster, governmental actions, wars, strikes, labor disputes, riots, theft, vandalism, terrorism or any reason beyond reasonable control; are damaged due to improper installation, misuse, abuse, accident or negligence in use, storage, transportation or handling, or tampering; or to products that are considered consumable items or items requiring repair or replacement due to normal wear and tear.

Product should be inspected prior to signing for delivery. Product damage incurred during shipping, unless noted on the Bill of Lading at the time of delivery, renders this warranty void.

LIMITED LIABILITY: In no event shall THE AUTHORIZED DEALER be liable to the purchaser or any third party for any indirect, incidental, consequential, special, exemplary or punitive damages arising out of the use of the product, including, without limitation, property damage, loss of value of the product or any third party products that are used in or with the product, or loss of use of the product or any third party products that are used in or with the product.

